

DIADEM® Terrace grids

ADVANTAGES

TRF - terrace grid

- Can be installed on terraces paved with concrete slabs
- The dense grid space guarantees safe walkway and protects the outlet from pollutions
- Simple installation

TRH/TH - terrace grid with adjustable height

- Fits every type of terrace outlet
- Load bearing plastic (metal in case of TH) house
- Fits most local height features
- Can be ordered in stain-proof execution

TRS - doorstep grille

- Robust refined steel cover
- Quick and easy installation
- Fits every outlet
- Can be set up within wide height limits, within 7 to 30 cm stepless

TRK - gravel basket and gravel basket extension

- It keeps away the growing media from the outlet In case of a high layer structure
- Eliminates contamination and gravel
- Height of the gravel basket can be increased with 20 cm using the extension



SPECIFICATIONS

TRF

Step-resistant terrace grid for quick conducting of the surface water on roof terraces, with plastic bottom part and dip galvanized steel mesh grid. Grid opening: 30x10 mm; loading class: A15; material of bottom part: polypropylene; material of grid: dip galvanized steel; mise: 30 x 30 x 5 cm (LxWxH); mass: 2,3 g/pc.

TRH

Adjustable height (m= 8 - 11,5 cm), step-resistant terrace grid for quick leading of surface water on roof terraces, bottom part in plastic and dip galvanized mesh grid. Grid opening: 30x10 mm; loading class: A15; material of bottom part: polypropylene; material of grid: dip galvanized steel; size: 30 x 30 x 8-11,5 cm (LxWxM); mass: 2,67 kg/pc.

TH

Infinitely height adjustable (H= 5 - 8cm), stepable terrace grille, with base and grille made of hot dip galvanized steel (MS=30x10mm), to ensure the fast drainage of surface water on roof terraces, with four M8 set screws for the height adjustment and for fixing the grille, with perforated sides and with pre-punched connection openings on four side for the SK-AL-24/60 drainage channel; Dimensions: 39,6 x 39,6 x 5-8 cm (LxWxH); Weight: 4.8 kg/pc.

TRS

Doorstep-grille with galvanized mesh grating installable in front of open or closed-bottom door-posts for quick water drainage. On plate base 4 pcs, sized D52 mm and 1 pc. D115 mm pre-perforated draintube connection. Grid opening: 40x10 mm; loading class: A15; material of bottom part: polypropylene; material of grid: dip galvanized steel; size: 75 x 50 x 5 cm (LxWxM); weight 10,35 kg/pc.

TRK-20-AL

Aluminium gravel basket, on the side with drainage holes, what impedes the solid materials (e.g. crushed stones) to be washed down into the drainage system by installing it between the outlets and the terrace grid. Size: 20 x 20 x 4 cm (LxWxM); mass: 0,14 kg/pc.

TRK+AL

Aluminium extension for the TRK-20-AL gravel basket, on the side with drainage holes, which provides protection for a higher layer structure from dirt or contamination. Size: 20,3 x 20,3 x 20 cm (LxWxH); weight: 0,3 kg/pc.

PRODUCT DESCRIPTIONS

TRF

Made in two types of layouts, step-proof, with dense grid spaced cover panel, simple terrace water outlet produced in several sizes.

TRH

Step-proof terrace grille with dense grid space, a variety of width and length versions, height adjustable top with a range of 4 cm.

TH

Step-proof terrace grille with dense grid space with base and grille made of hot dip galvanized steel to ensure the fast drainage of surface water on roof terraces.

TRS

Doorstep grilles made in three sizes that can be installed in front of open or closed-bottom door-posts, which, through the galvanized mesh grating, allows surface to get into the drainage layer directly or through the element, and makes the door step non-skid, clean and protect against raindrops spattering.

TRK-20-AL and TRK+AL

An aluminium frame (TRK-20-AL) placed directly around the roof outlet with drainage holes, preventing gravel from the build-up from falling through, and protecting against other contaminants. The gravel basket extension (TRK+AL) is an aluminium frame with drainage holes that can extend the gravel basket's height up to 20 cm, giving it a larger capacity to retain more unwanted material.



APP Dachgarten GmbH, D-85049 Ingolstadt, Jurastrasse 21 • Tel.: +49 841 370 9496
DIADEM® APP Kft., H-9028 Győr, Fehérvári út 75. • Tel.: +36 96 512 910
info@diadem.com • www.diadem.com

DIADEM® is a registered trademark. The written permission of the publisher is required to use the images, texts and illustrations in this publication. All rights reserved. Data and images contained in the brochure are indicative, we do not accept responsibility for possible printing errors. • 09052301



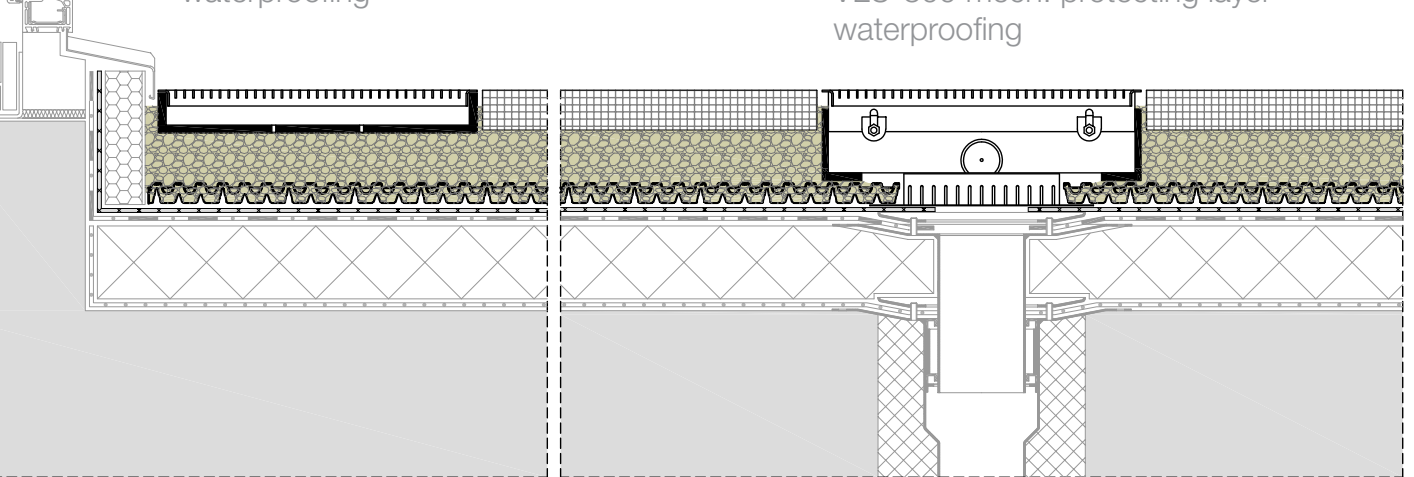
Green Up the Roof!

DIADEM® Terrace grids

DIADEM® BUILD-UP

TRS doorstep grille
 frost-proof pavement
 crushed stone bedding
 DD-25H, filled
 VLU-300 mech. protecting layer
 waterproofing

TRH terrace grid
 frost-proof pavement
 crushed stone bedding
 TRK gravel basket
 DD-25H, filled
 VLU-300 mech. protecting layer
 waterproofing



TECHNICAL DATA

	Product Nr.	L x W x H (cm)	Weight (kg)	Mesh size (mm)	Drainage opening	Material (base)	Material (grating)
TRF-FF-40-FF	210703	40x40x4	4,6		-	-	dip galvanized steel
TRF-FF-50-FF	210701	50x50x4	6,16		-	-	steel
TRF-30-FF-MW-30/10	210572	30x30x5	2,3		-		(standard)
TRF-40-FF-MW-30/10	210510	40x40x5	3,79		-		or
TRF-50-FF-MW-30/10	210503	50x50x5	5,24		-		
TRH-30-FF-MW-30/10	210668	30x30x8-11,5	2,67	30x10		polypropylene	stainless steel
TRH-40-FF-MW-30/10	210669	40x40x8-11,5	4,23				(custom)
TRH-50-FF-MW-30/10	210670	50x50x8-11,5	6,4				
TH-5/8	210704	39,6x39,6x5-8	4,8				
TH-8/11	210705	39,6x39,6x8-11	5,2		4pcs	dip galvanized steel	
TF+6 extension element	210706	39,8x39,8x8	1,6	-			
TRS-60-FF	210403	60x40x5	6,67	30x10			dip galvanized steel
TRS-75-FF	210404	75x50x5	10,35				(standard)
TRS-100-FF	210405	100x50x5	13,15			polypropylene	or
TRK-20-AL	210801	20x20x4	0,14	-	-	-	aluminium
TRK+AL	210802	20,3x20,3x20	0,3	-	-	-	aluminium



APP Dachgarten GmbH, D-85049 Ingolstadt, Jurastrasse 21 • Tel.: +49 841 370 9496
 DIADEM® APP Kft., H-9028 Győr, Fehérvári út 75. • Tel.: +36 96 512 910
 info@diadem.com • www.diadem.com

DIADEM® is a registered trademark. The written permission of the publisher is required to use the images, texts and illustrations in this publication. All rights reserved. Data and images contained in the brochure are indicative, we do not accept responsibility for possible printing errors. • 09052301



Green Up the Roof!